

Chapter 11 – Filtering and Sorting

By Allen Mellen

One of the most powerful features of The Master Genealogist is the capability it gives you to filter your previously entered data – that is, to select a portion of the data for special attention. Reasons for filtering can include setting a flag in order to accent people either on screen or in charts, producing a report for a selected portion of your data, making a list to assist in further research, and many other purposes. A filter lets you look at just a portion of your data – for example, all persons named Alexander, all marriages in Tennessee, all births in Australia between 1850 and 1900, all places containing the word Paris, and just about anything else you can think of, singly or in combination.

Most of the filters discussed in this chapter will be those used for the Picklist, the Project Explorer, and several reports including the List of People. These “people filters” are the ones you will probably use most often, and they can be saved in filter files with the file extension¹ “FLP.” Other types of filters are discussed at the end of the chapter.

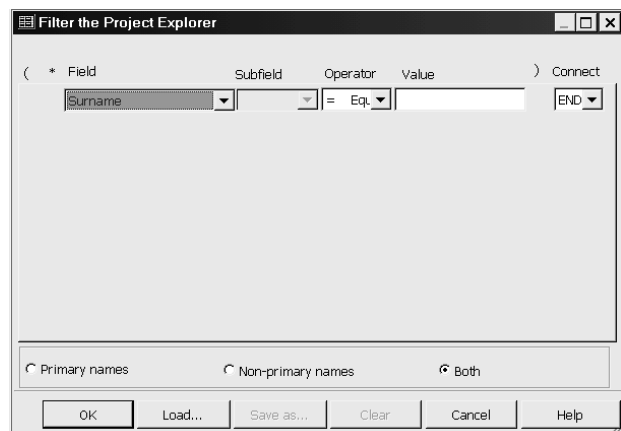


Figure 11-1: Filter the Project Explorer screen

Designing a Filter

Filters can be simple or complex. When you design a filter you need to decide on the target group – the people you wish the filter to include, and on the output – the form in which you wish the results to

¹ Filter files are saved in the same folder as your project. See Windows Help for information on file extensions.

be presented. Let us first consider a simple filter to identify people in your project born in a specific place, Australia for example. The output could be presented in a filtered Picklist or Project Explorer, a List of People, another report, or perhaps a flag. In this case, we will be filtering the Project Explorer.

Once you have defined the target group and the output, the next step is to express the definition as one or more conditions.

Filter conditions in TMG are generally in the form:
Field Operator Value Connector.²

The condition for the group of persons born in Australia can be expressed as “Place of birth is Australia.” Here, the Field is “Place of birth;” the Operator is “Is;” the Value is “Australia;” and the Connector is the period or full stop, expressed in TMG filters as “END.”

Since we are filtering the Project Explorer in this example, we need to bring up the “Filter the Project Explorer” screen. There are two ways to do this:

1. Choose **Edit > Filter the Project Explorer**, or
2. Click on the [Filter] button in the Project Explorer window.

The screen shows a form with the heading
(* Field Subfield Operator Value) Connect

The first time the screen appears, the form shows one entry consisting of a Field, an inactive Subfield, an Operator, a blank Value, and a Connector (*see Figure 11-1*).

Except for Value, you make entries by choosing from a drop-down list or clicking on a check box.

Field

The drop-down list for Field contains the 9 name fields, all of the flags in the project, a set of entries beginning with the number symbol #, and an

² In this simplified version of the form, the Field includes any Primary Marker and Subfield. The Connector includes any Parentheses.