

Chapter 13 - Generating Charts for Use in Visual Chartform™

By Robin Lamacraft

Should I use a chart or a report?

The charts produced by **Visual Chartform™** (VCF) are graphical outputs that can extend over many pieces of paper or cover a *very large* piece of paper. The Standard Reports that produce page-oriented text or word-processor documents are described in *Chapter 10, Customizing Reports*.

VCF is a separate but tightly coupled chart-drawing application, which is used by TMG to construct its charts. This separation of functionality provides exceptional power and flexibility found in no other genealogical chart construction software to date. This chapter describes the settings that you can make within TMG to get the desired chart constructed. The later part of this chapter gives guidelines on how to make those charts more effective.

How do you make a chart?

Making a chart in The Master Genealogist™ (TMG) is a simple process.

Here is an *overview* of that sequence:

1. Select *one of* the following alternatives from the **Main Menu**:
 - **Reports > Ancestor Box Chart**
 - **Reports > Descendant Box Chart**
 - **Reports > Hourglass Box Chart**
 - **Reports > Fan Chart**
2. Select a **Chart configuration** on the **Report Definition screen**.
3. (Optional) Click [Options] to adjust any settings in this configuration.
4. Click [Make Chart].

The above steps are described in this chapter.

The editing, saving and printing of a chart within VCF are described in *Chapter 14, Working with Charts in Visual Chartform™*.

What is a Box Chart?

In a box chart, the details about a person are placed within a rectangular area which traditionally has an

outline drawn around it, hence the name box. If the box chart flows from one generation to the next vertically on the page, these boxes are arranged in rows. Columns of boxes are used in charts that flow horizontally across the page from one generation to the next. Connecting lines are always drawn from the child to the parent. Where siblings are shown, the boxes are drawn in their birth date sequence. Charts may be drawn in one of 4 orientations (or flows) *left to right*, *right to left*, *top to bottom* or *bottom to top*.

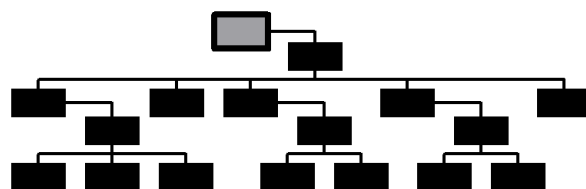


Figure 13-1: A Top to Bottom Descendant Box Chart

A **Descendant Box Chart** starts at a focus person and progresses forward in time displaying the details of successive descendant generations. *Figure 13-1* shows a gray filled rectangle representing the details of the focus person and a number of black filled rectangles each representing another person's details. Descendant Box Charts are also known as **drop-charts**.

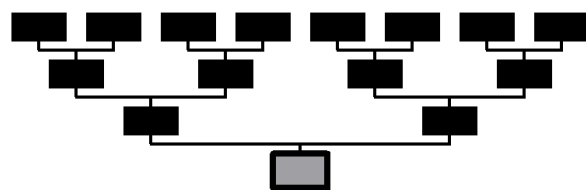


Figure 13-2: A Bottom to Top Ancestor Box Chart

An **Ancestor Box Chart** starts at the focus person and progresses backwards in time displaying the details of successive ancestral generations. In *Figure 13-2* the gray filled rectangle represents the details of the focus person and each black filled rectangle represents another person's details. Ancestor Box Charts are also known as **pedigree charts**.